



MGK-33

MAGNETIC LEVEL GAUGES

GENERAL FEATURES

It is a convenient and safe device designed to combine the principles of lifting and pulling of electro-magnet. The magnets in the float enable you to follow the liquid change level with the help of red-white coloured flaps placed on the outer wall. It is suitable for use in systems requiring high pressure and temperature.

Advantages

- Continuous and easy monitoring
- Sealing construction
- Requested length and connection manufacturing
- Ability to work in different densities
- Manufacturing according to various installation types
- Long life time
- Easy maintenance
- Up to 6 meters can be manufactured in one piece.
- Works up to 200 °C in PN 10/16/25/40(Opt.) pressure class
- Self-cleaning feature of the system with up-and-down

Application Areas

- All steam and hot water boilers
- Waste water systems
- Filling and unloading containers

- All chemical and petrochemical tanks
- Tanks for petroleum and petroleum products
- Oil boilers
- Diesel fuel tanks and generator sets
- Submarine, helicopter and ship fuel tanks

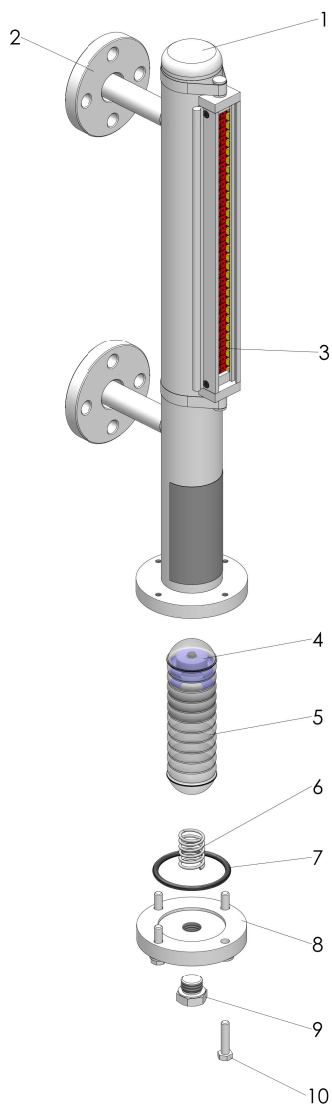
PRODUCT FEATURES

Body	: AISI 304 /316 Stainless Steel
Float	: AISI 316L Stainless Steel
Magnetic Disc	: Aluminium
Flap	: Aluminium
Connection	: Flange, M/F, Union
Flange Type	: DIN, ANSI, JIS
Flange Material	: Carbon Steel St. 37.2, Stainless Steel
Max. Working Pres.	: 10 bar
Max Working Temp.	: 200 °C
Contact	: YES
Protection Class	: IP66
Drain Plug	: 3/8"



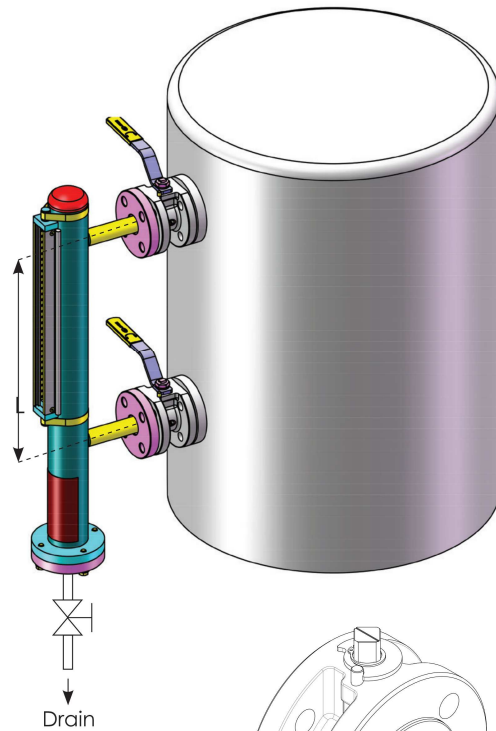
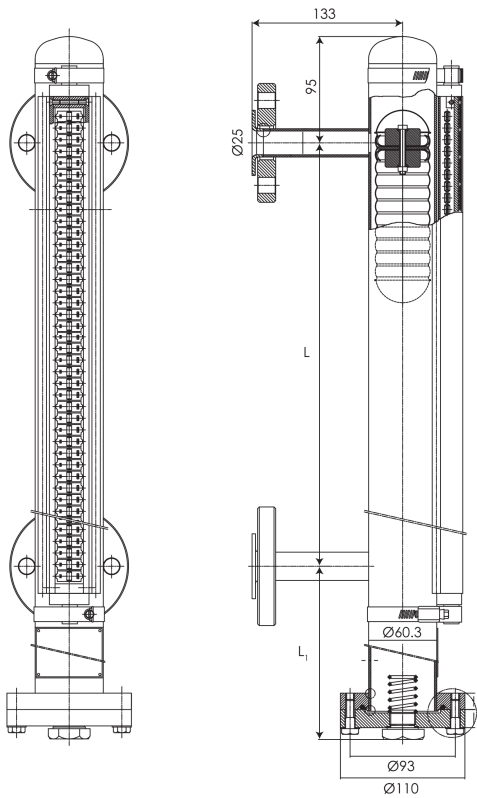
Different size, connection, pressure and applications Please consult our sales team.

MGK-33 MAGNETIC LEVEL GAUGES

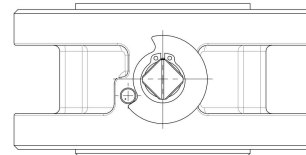
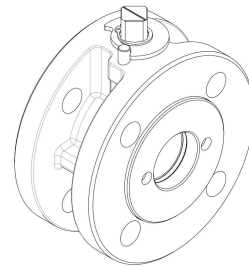


Spare Parts		
1	Body	Stainless Steel
2	Connection Flange	Carbon Steel, Stainless Steel
3	Flaps	Aluminium
4	Magnetic Disc	Magnet
5	Float	Stainless Steel
6	Float Spring	Spring Steel
7	O-Ring	Silicon
8	Drain Flange	Carbon Steel, Stainless Steel
9	Drain Bolt	Stainless Steel
10	Bolt	Stainless Steel

MGK-33 MAGNETIC LEVEL GAUGES



**MBK-45
Monoblock Valve
Dimensions**



You are required to inform sales team during the order

- Connection type and dimension (M/F, flange, diameter)
- Distance between connections
- (From the upper pipe center to the bottom pipe center)
- Fluid density to be used
- Fluid temperature

SPARE PART		
1	Connection Type	Flange, M/F, uNION
2	Flange	Carbon Steel / Stainless Steel (DIN, ANSI, JIS)
3	Float	Stainless Steel (PN 16/25/40)
4	By-pass Tube	Stainless Steel (AISI 304 / 316)
5	Bolt	Stainless Steel
6	Drain Bolt	Stainless Steel
7	Magnetic Disc	Aluminium
8	Indicator Glass	Plexiglass

